

# Multi-line and Progressive Systems



## Application

### Pure Multi-line Systems

- Dispersed, single lubrication points
- Large quantities of lubricant per lube point
- Individual adjustment for each lube point
- Continuous supply requirement

### Pure Progressive Systems

- Several lubrication points within small to medium distances
- Ideal for machines and small systems

### Sample Applications

Small to medium sized systems and machines.

### Industries

General industry, construction machines, mobile applications

Multi-line and progressive systems constantly operate as long as lubricant is fed by the pump.

For systems that have more than 1 lubrication point within a relatively short distance, a pure multi-line system is not always economical. Additionally, pure Multi-line systems are not easily monitored. As a result, progressive systems or combined progressive/multi-line systems often provide the best solution.

The high-precision SSV progressive metering device divides the lubricant input into desired quantities.

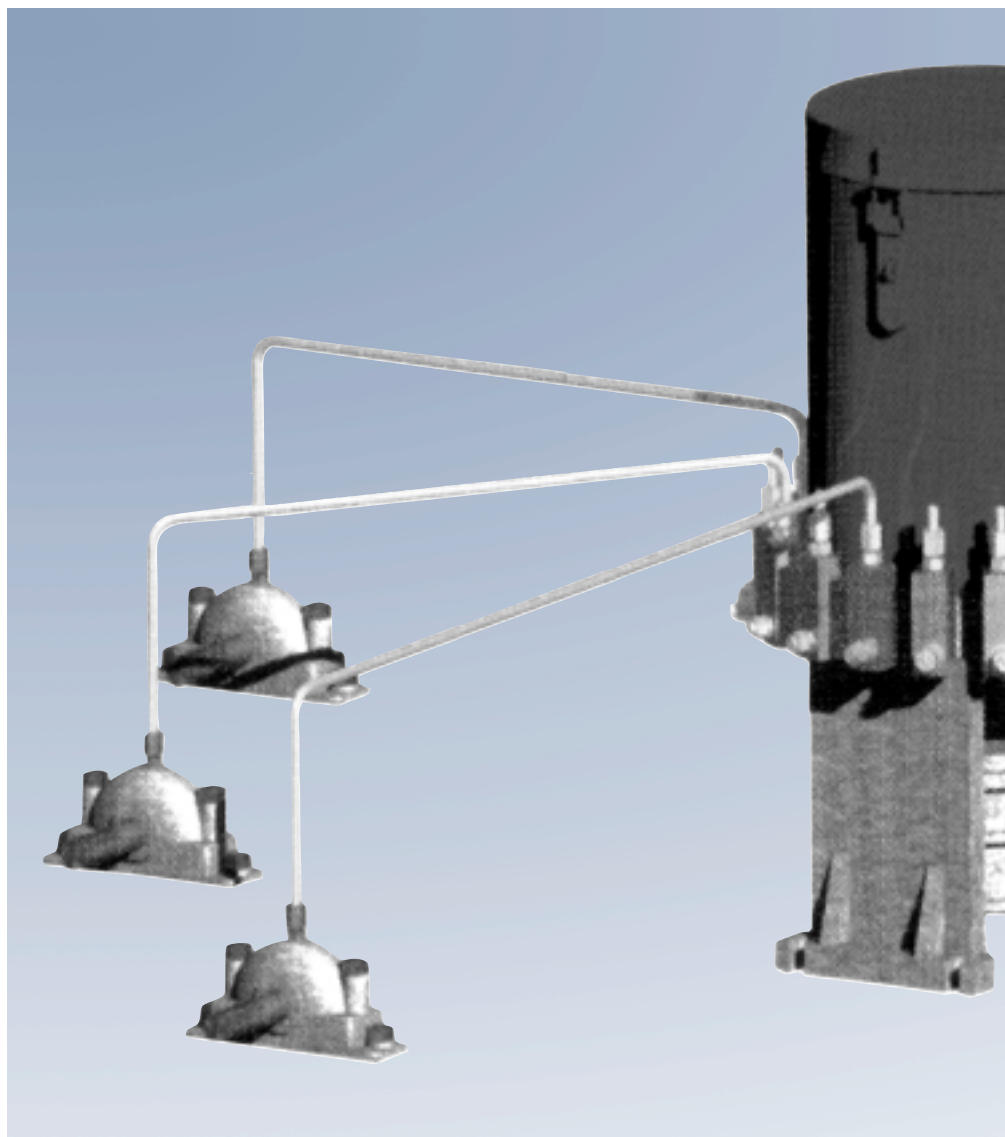
## Capabilities

### Capabilities of Progressive or Combined Progressive/Multi-line Systems:

- Visual or electric monitoring of the entire system via metering device
- Reliable lubrication even under severe conditions
- Easily extendible via available pump element
- Capable of completely supplying machines or small systems with lubricant.

## Function

The system will continue to operate as long as the pump is in operation. When the pump is turned off, the progressive metering device will stop in its current position. Upon restarting, the progressive metering device will carry on where it left off.



*Schematic Combined Multi-line / Progressive System*

**Common Components:**

**Pumps:**

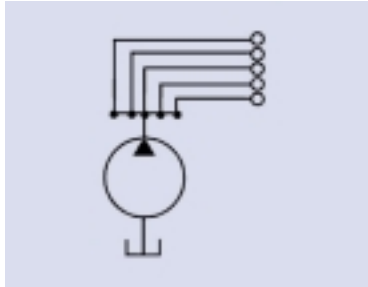
HJ\*, HP, HPG/HPGO,  
HP-500W manual pumps,  
QLS301, 203, 233, 205, 215,  
ZPU01/02\* electric pumps,  
PPG/PPGO  
pneumatic pumps,  
FlowMaster hydraulic pumps\*\*  
HT1L101

**Metering Devices:**

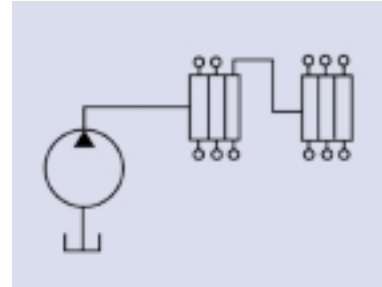
SSV, SSVM, SSV-FL

\* See Two-line section

\*\* Not covered in this catalogue -  
ask your Lincoln representative  
for details



*Schematic Multi-line System*



*Schematic Progressive System*

